



Global Jet Sales

Corporate Trading, Inc.

111 Second Ave. NE, Suite 103
St. Petersburg, FL 33701
727.864.9443 ~ Fax 727.864.9448

3775 Flight Avenue, Suite 204
Redding, CA 96002
530.226.3399 ~ Fax 530.226.3398

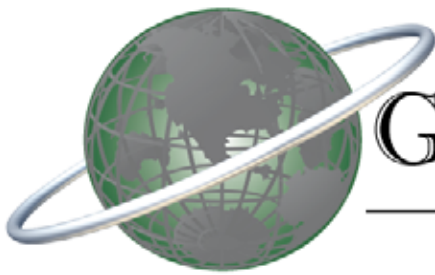
www.JetSearch.com ~ sales@JetSearch.com

2000 Lear 60 s/n 197

Priced to Sell
Will Deliv w/ Fresh 12yr
Fresh 300/600/900 Hr Insp
ESPG ~ EASA ~ Jar Ops



Contact: Garrett Burke or Alexander Janas
sales@jetsearch.com



Global Jet Sales

Corporate Trading, Inc.

sales@JetSearch.com
111 2nd Ave NE Suite 103
Saint Petersburg FL 33701
727-864-9443

3775 Flight Avenue Suite 204
Redding CA 96002
530-226-3399
www.JetSearch.com

2000 LEAR 60 S/N: 197 **\$MAKE OFFER**

<u>AirFrame</u> <i>CAMP</i>	<u>Engines</u> P&W 305A	<i>ESPG</i>
2743 Hours since New	<i>Engine 1</i> 2637 SNEW	
1692 Landings	<i>Engine 2</i> 2743 SNEW	

Auxiliary Power Unit

T-20G-10-C3A 1833 Total Time

Avionics

4 Tube COLLINS PROLINE EFIS	COLLINS TTR-920 CHG 7 TCAS
2 COLLINS VHF-422C COMMS	ARTEX 406 ELT
2 COLLINS VIR-432 NAV'S	ALLIED SIGNAL EGPWS
2 COLLINS ADF-462 ADF	UNIVERSAL CVR-120 CVR
2 COLLINS DME-442 DME	UNIVERSAL FDR 2100 FLT RECORDER
2 TDR-94D MODE S / ENH SURV TDR	DUAL COLLINS FCC-850A AUTOPILOT
1 COLLINS RTA-854 RADAR	
2 UNIVERSAL UNS-1C FMS	
2 UNIVERSAL UNS-1C GPS	
1 KING KTR-953 W/SELCAL HF	

Special Features

RVSM/RNP-5	COLLINS ALT-55B RADIO ALT	12YR BEING C/W 6/2012
8.33 / FM IMMUNITY	DUAL COLLINS ADC-850D	300/600/900HR C/W 11/11
EASA & JAR OPS COMP	EMERGENCY LIGHTING SYSTEMS	NSE OH DUE @ 3000 LNDGS
PASSENGER BRIEFING CARDS	DUAL DAVTRON CLOCKS M877	MLG OH DUE @ 6000 LNDGS
DUAL A-750 HEADSETS	EROS OXYGEN MASKS	WEIGHT/BALANCE C/W 10/07
IN SERVICE 2001		LOGS COMPLETE & CURRENT
		ALL SB/AD'S C/W

Exterior 2000

OVERALL WHITE W/BLEUE STRIPES.

Interior 2000

SEVEN PLACE FIREBLOCKED INTERIOR. FWD 2-PLACE DIVAN OPP FWD FACING SEAT,AFT DBL CLUB. BEIGE LEATHER SEATING,LT BEIGE SIDEWALLS & HEADLINER AND TAN CARPET. HIGH GLOSS MAHOGANY CABINTRY. FWD GALLEY W/DUAL HOT LIQUID CONTAINERS, OVEN - MAPCO WARMING, NESPRESSO COFFEE MAKER. ENTERTAINMENT INCLUDES AIRSHOW 400, VCR, CD PLAYER W/CHANGER,FWD MONITOR,MONITOR OUTLETS AT EACH PASSENGER SEAT. AFT BELTED LAV.

Weights

MTOGW: 23,500	RAMP: 23,350	ZFW: 16,500	LANDING: 19,500
BOW:	EMPTY: 14,669	FUEL WT: 7,910	FUEL CAP: 1181



Global Jet Sales

Corporate Trading, Inc.

111 Second Ave. NE, Suite 103
St. Petersburg, FL 33701
727.864.9443 ~ Fax 727.864.9448

3775 Flight Avenue, Suite 204
Redding, CA 96002
530.226.3399 ~ Fax 530.226.3398

www.JetSearch.com ~ sales@JetSearch.com

Exterior



Int Aft



Global Jet Sales

Corporate Trading, Inc.

111 Second Ave. NE, Suite 103
St. Petersburg, FL 33701
727.864.9443 ~ Fax 727.864.9448

3775 Flight Avenue, Suite 204
Redding, CA 96002
530.226.3399 ~ Fax 530.226.3398

www.JetSearch.com ~ sales@JetSearch.com

Interior Fwd



Divan



Global Jet Sales

Corporate Trading, Inc.

111 Second Ave. NE, Suite 103
St. Petersburg, FL 33701
727.864.9443 ~ Fax 727.864.9448

3775 Flight Avenue, Suite 204
Redding, CA 96002
530.226.3399 ~ Fax 530.226.3398

www.JetSearch.com ~ sales@JetSearch.com

Club Seating



Lav



ESTIMATED VARIABLE COSTS - Per Hour

Learjet 60

Fuel (1)	\$1,480.74
Fuel Additives	
Lubricants	
Maintenance Labor (2)	174.84
Parts Airframe/Eng/Avion (3)	129.83
Engine Restoration (4)	447.22
Thrust Reverser Allowance	
Propeller Allowance	
APU Allowance	41.92
Major Periodic Maintenance	
Misc Exp. - Landing/Parking	24.11
- Crew Expenses	89.56
- Supplies/Catering	47.22
- Carbon Offset (5)	
- Other	
Fractional Fuel Surcharge Cost/Hour + Tax	
Fractional Cost/Hour + Tax	
Total Variable Cost/Hour	\$2,435.44
Cost per Nautical Mile	\$5.88
Average Speed-Kts. (6) 600-nm trip	414.00

Cost data in this report is intended to be used as a benchmark

FOOTNOTES - Size of Operation: 1 - 2 Aircraft

Date: 3/9/2012

Currency: \$

Type of Operation: Corporate

1. Fuel Cost	6.67
Gallons/Hour Blk Fuel/Flt Time +15%	222
2. Maint. Labor Cost per Hour	93
Maint. Hours/Flight Hours	1.88
3. Incl. Engine Parts Cost	No
Engine Model	PW305A
Aircraft Model Year	2003
4. Overhaul Cost Source	JSSI Prem11
5. CO2 Cost Per Tonne	
6. Block Speed Source	Mftr Data



ANNUAL FIXED COSTS

Learjet 60

Crew salaries - Captain (7)	\$109,000
- Co Pilot	77,000
- Flt Attendant	
- Flt Eng/Other	
- Benefits	55,800
Hangar - Typical	33,800
Insurance - Hull (8)	21,000
Single Limit Liability	10,500
Recurrent Training	41,000
Aircraft Modernization (9)	35,000
Navigation Chart Service	4,579
Refurbishing (10)	26,040
Computer Mx. Program (11)	4,500
Weather Service (12)	700
Other Fixed Costs	
Mgmt Fee/Yr	
Total Fixed Cost/Year	\$418,919

Cost data in this report is intended to be used as a benchmark

FOOTNOTES - Size of Operation: 1 - 2 Aircraft

Date: 3/9/2012

Currency: \$

7. Crew Salary Source	10 NBAA
Number of Crew	2
8. Ins Hull Value/Frac Share Cost	4,200,000
Hull Insurance Rate (%)	0.50
9. Modernization	10 Yr Avg
10. Refurbish Labor Hrs/Seat	40
11. Comp. Mx Program Source	Typical
12. Weather Service Source	Typical



ANNUAL BUDGET

Learjet 60

Utilization - Nt. Miles	175,000
- Hours	423

Variable Cost	1,030,191
Fixed Cost	418,919
Total Cost (No Depreciation)	\$1,449,110
- Per Hour	3,426.00
- Per Nt. Mile	8.28
- Per Seat Nt. Mile	1.18

Total Cost (No Depreciation)	1,449,110
Book Depreciation (13)	420,000
Total Cost (Book Dep)	\$1,869,110
- Per Hour	4,419.00
- Per Nt. Mile	10.68
- Per Seat Nt. Mile	1.53

Total Cost (No Depreciation)	1,449,110
Market Depreciation (14)	168,000
Total Cost (Market Dep.)	\$1,617,110
- Per Hour	3,823.00
- Per Nt. Mile	9.24
- Per Seat Nt. Mile	1.32

Cost data in this report is intended to be used as a benchmark

Footnotes - Size of Operation: 1 - 2 Aircraft

Date: 3/9/2012

Currency: \$

13. Book Depreciation Rate 10% per yr

14. Market Depreciation Rate 4.00



GENERAL COMPARISON

Learjet 60

Cabin-Height (Ft.)	5.71
- Width	5.92
- Length	17.67
Cabin volume (Cu. Ft.)	453.00
Cabin Door Height (Ft.)	5.30
- Width	2.00
Baggage -Int. (Cu.Ft.)	24.00
- External	24.00
Typical Crew/Pass Seating	2/7
Weight-Max Take-off (Lbs.)	23,500
- Maximum Landing	19,500
- Basic Operating	14,772
- Usable Fuel	7,910
Payload-Full Fuel (Lbs.)	1,068
- Maximum	2,228
Certified	Yes
IFR Certified	Yes
Price - New (Corporate)/1000	12,600
- Pre Owned Rng/1000	2,700/4,200
- Years Produced	1993 - 2003



PERFORMANCE COMPARISON

Learjet 60

Range-NBAA IFR Res (N.Mi.)	
Seats Full	2,186
Ferry Range - (Pilot(s) only, no pax)	2,418
<hr/>	
Range-30 Min. Res (N.Mi.)	
Seats Full	
Ferry Range - (Pilot(s) only, no pax)	
Balanced Field Length (Ft.)	5,450
Landing Field Length - FAR 91	3,125
Landing Field Length - FAR 121	5,208
Landing Field Length - FAR 135	3,906
<hr/>	
Rate Of Climb (Ft/Min)	4,500
- One Engine Out	714
<hr/>	
Cruise Speed-Max (KTAS)	465
- Normal	446
- Long Range	423
Stall Speed (IAS)	100
<hr/>	
Ceiling-Service MTOW (Ft.)	42,400
- Certified	51,000
- Service OEI	24,500
- Hover IGE (Helicopter Only)	
- Hover OGE (Helicopter Only)	



Learjet 60

The Learjet 60 is a Learjet 55, with a 3½-foot longer fuselage, Pratt & Whitney Canada PW305 engines, Collins Pro Line 4 avionics, and numerous other improvements.

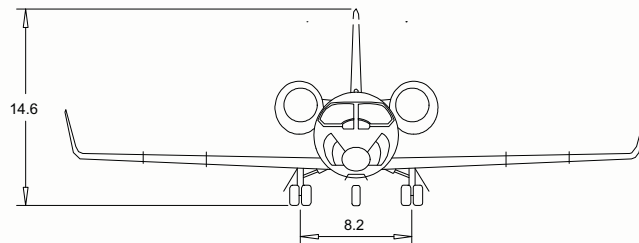
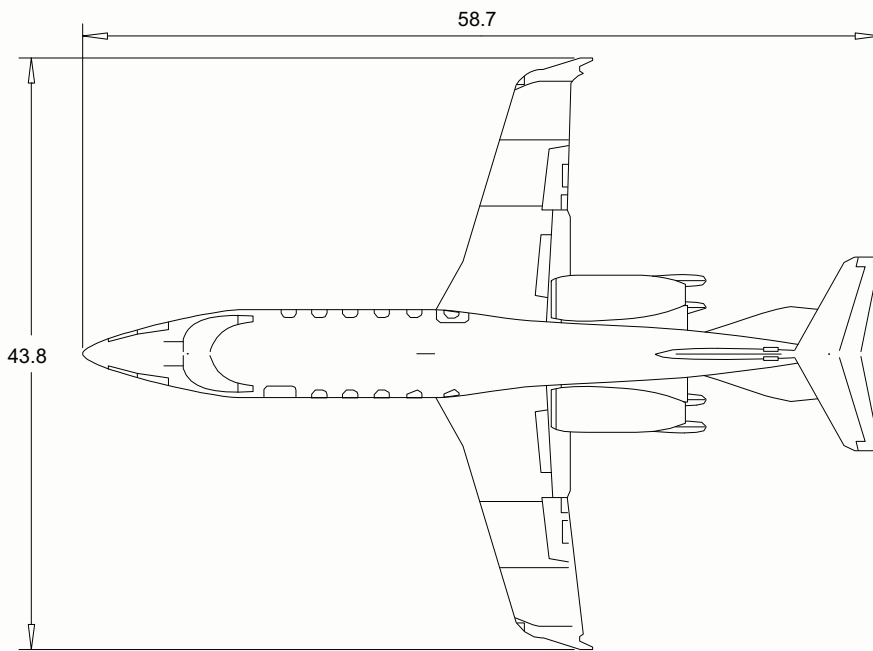
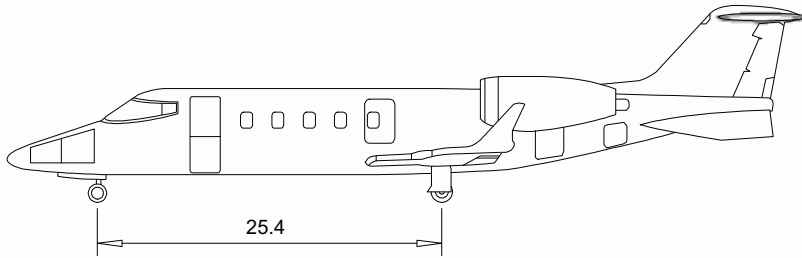
The Learjet 55 was Lear's entry into the medium-sized business jet field. In designing the 55, Learjet utilizes the earlier Longhorn 28/29 wing with winglets and married it to a larger fuselage. The step-down aisle in the cabin has 5 ft 9 inches of headroom

The Learjet 55B introduced a digital flight deck, modified wings, and an improved interior. The 55C comes equipped with Delta Fins that improve performance and handling.

The improved Learjet 60 first flew in June 1991 and deliveries started after certification in 1993.

EXTERIOR

Scale = 1:160



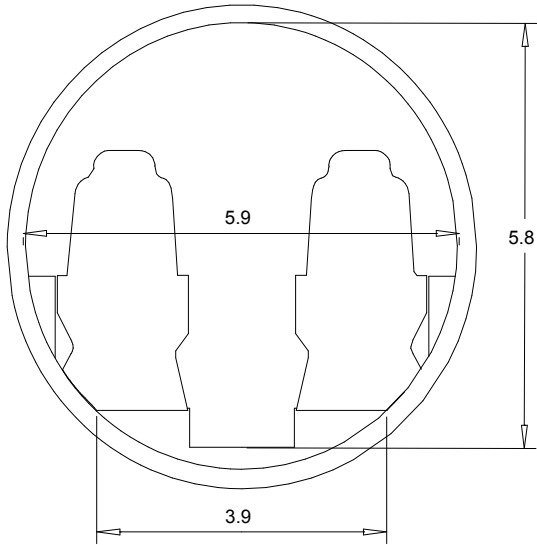
All dimensions are measured in Feet unless otherwise specified.

INTERIOR

Orleans, Massachusetts (508)255-5975

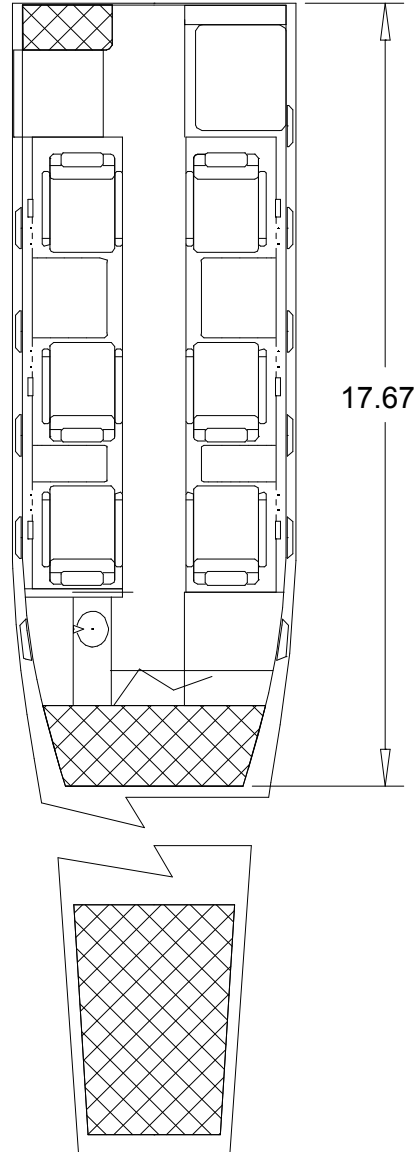
© 2006 Conklin & de Decker Associates, Inc.

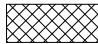
Scale = 1:30



Learjet 60

Scale = 1:50



 - Baggage

All dimensions are measured in Feet unless otherwise specified.