



**Global Jet Sales**

Corporate Trading, Inc.

111 Second Ave. NE, Suite 103  
St. Petersburg, FL 33701  
727.864.9443 ~ Fax 727.864.9448

3775 Flight Avenue, Suite 204  
Redding, CA 96002  
530.226.3399 ~ Fax 530.226.3398

[www.JetSearch.com](http://www.JetSearch.com) ~ [sales@JetSearch.com](mailto:sales@JetSearch.com)

# 2000 Lear 60 s/n 200

**ESPG  
JAR Ops / EASA  
Motivated Seller**



**Contact: Garrett Burke  
[sales@jetsearch.com](mailto:sales@jetsearch.com)**



# Global Jet Sales

Corporate Trading, Inc.

sales@JetSearch.com  
111 2nd Ave NE Suite 103  
Saint Petersburg FL 33701  
727-864-9443

3775 Flight Avenue Suite 204  
Redding CA 96002  
530-226-3399  
www.JetSearch.com

**2000 LEAR 60 S/N: 200**

**\$MAKE OFFER**

### AirFrame

3920 Hours since New  
2045 Landings

### Engines

*Engine 1*  
*Engine 2*

P&W 305A  
3527 SNEW  
3527 SNEW

*ESPG*  
1 SHS  
1 SHS

### Auxiliary Power Unit

SUNDSTRANDT20G-10C3A

2476 Total Time

### Avionics

4 Tube COLLINS PROLINE IV EFIS  
2 COLLINS VHF-422C COMMS  
2 COLLINS VIR-432 NAV'S  
2 COLLINS ADF-462 ADF  
2 COLLINS DME-442 DME  
2 COLLINS TDR-94D MODE S TDR  
1 COLLINS WXR-840 RADAR  
2 UNIVERSAL UNS1C GPS FMS  
1 KHF-950 W/JETCAL-5 HF

COLLINS TCAS-94 W/ CHG 7 TCAS  
MOTOROLA W/ 2 HS SAT/COM  
TRI-BAND ARTEX C406-2 ELT  
ALLIED SIGNAL MARK V W/WD EGPWS  
UNIVERSAL CVR-120 CVR  
FAIRCHILD FDR-1000 FLT RECORDER  
COLLINS FSC-850 AUTOPILOT

### Special Features

RVSM  
8.33/FM IMMUNITY  
JAR OPS / EASA  
AHS-85  
ADS-850 COMPUTERS  
LOGO LIGHTS  
R134 AIR COND.  
ENG COVER STORAGE BOX  
ALT-4000 RAD ALT

DUAL RTU-870C  
EMERGENCY EXIT LIGHTING  
77 CUBIC FT OXYGEN BOTTLE  
LIGHTED CNTRL WHL/CHRT HLDRS  
CONCORDE BATTERIES  
115 VAC OUTLETS CBN/LAV  
AFT BAGGAGE SMOKE DTCTR  
ROSEN SUN VISORS  
A/C IN SERVICE DATE 08/01

300HR INSP C/W 03/12  
600HR INSP DUE 04/12  
1200HR INSP C/W 11/11  
2400 INSP C/W 2/08  
12YR INSP TO BE C/W 6/12  
ENG HS BEING DONE 4/2012

### Exterior 06/2012

MATTERHORN WHITE. NEW PAINT 6/2012

### Interior 2000

SEVEN PLACE FIREBLOCKED INTERIOR. FWD SIDE FACING 2 PLACE DIVAN OPPOSITE A FWD FACING SINGLE SEAT, AFT DOUBLE CLUB. BEIGE LEATHER SEATS & DIVAN, BURL WALNUT HI-GLOSS VENEER, BEIGE CARPET. FWD GALLEY W/ MICROWAVE OVEN. ENTERTAINMENT W/ AIRSHOW 400, UNIVERSAL CD-2000 CABIN VIDEO SYSTEM, VHS PLAYER. AFT LAV. LEATHER AND CARPETS REPLACED 2008. NEW WOOD 6/2012.

### Weights

MTOGW: 23,500      RAMP: 23,750      ZFW: 17,000      LANDING: 19,500  
BOW:                      EMPTY:                      FUEL WT: 7,910      FUEL CAP: 1181



**Global Jet Sales**

Corporate Trading, Inc.

111 Second Ave. NE, Suite 103  
St. Petersburg, FL 33701  
727.864.9443 ~ Fax 727.864.9448

3775 Flight Avenue, Suite 204  
Redding, CA 96002  
530.226.3399 ~ Fax 530.226.3398

[www.JetSearch.com](http://www.JetSearch.com) ~ [sales@JetSearch.com](mailto:sales@JetSearch.com)



**Fwd  
Interior**





**Global Jet Sales**

Corporate Trading, Inc.

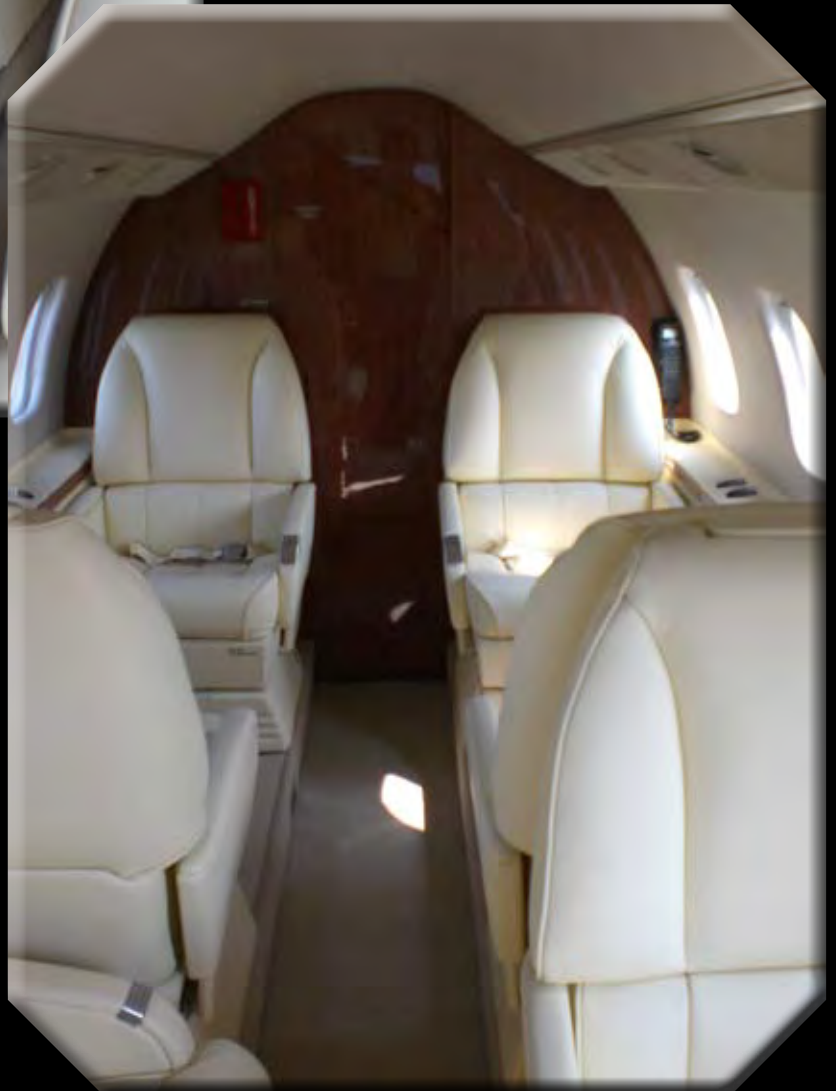
111 Second Ave. NE, Suite 103  
St. Petersburg, FL 33701  
727.864.9443 ~ Fax 727.864.9448

3775 Flight Avenue, Suite 204  
Redding, CA 96002  
530.226.3399 ~ Fax 530.226.3398

[www.JetSearch.com](http://www.JetSearch.com) ~ [sales@JetSearch.com](mailto:sales@JetSearch.com)



## **Aft Interior**





**Global Jet Sales**

Corporate Trading, Inc.

111 Second Ave. NE, Suite 103  
St. Petersburg, FL 33701  
727.864.9443 ~ Fax 727.864.9448

3775 Flight Avenue, Suite 204  
Redding, CA 96002  
530.226.3399 ~ Fax 530.226.3398

[www.JetSearch.com](http://www.JetSearch.com) ~ [sales@JetSearch.com](mailto:sales@JetSearch.com)



## **Refreshment Center / Divan**



**Lav**



## ESTIMATED VARIABLE COSTS - Per Hour

### Learjet 60

Fuel (1)	\$1,433.74
Fuel Additives	
Lubricants	
Maintenance Labor (2)	174.84
Parts Airframe/Eng/Avion (3)	129.83
Engine Restoration (4)	447.22
Thrust Reverser Allowance	
Propeller Allowance	
APU Allowance	41.92
Major Periodic Maintenance	
Misc Exp. - Landing/Parking	25.08
- Crew Expenses	93.14
- Supplies/Catering	49.08
- Carbon Offset (5)	
- Other	
Fractional Fuel Surcharge Cost/Hour + Tax	
Fractional Cost/Hour + Tax	
<b>Total Variable Cost/Hour</b>	<b>\$2,394.85</b>

**Cost per Nautical Mile** \$5.78

Average Speed-Kts. (6) 600-nm trip 414.00

Cost data in this report is intended to be used as a benchmark

**FOOTNOTES - Size of Operation:** 1 - 2 Aircraft

**Date:** 4/25/2012

**Currency:** \$

**Type of Operation:** Corporate

1. Fuel Cost	6.86
Gallons/Hour Blk Fuel/Flt Time +15%	209
2. Maint. Labor Cost per Hour	93
Maint. Hours/Flight Hours	1.88
3. Incl. Engine Parts Cost	No
Engine Model	PW305A
Aircraft Model Year	2003
4. Overhaul Cost Source	JSSI Prem11
5. CO2 Cost Per Tonne	
6. Block Speed Source	Mftr Data



## ANNUAL FIXED COSTS

### Learjet 60

Crew salaries - Captain (7)	\$110,000
- Co Pilot	75,000
- Flt Attendant	
- Flt Eng/Other	
- Benefits	55,500
Hangar - Typical	33,800
Insurance - Hull (8)	18,240
Single Limit Liability	10,500
Recurrent Training	41,000
Aircraft Modernization (9)	35,000
Navigation Chart Service	4,730
Refurbishing (10)	26,040
Computer Mx. Program (11)	5,250
Weather Service (12)	700
Other Fixed Costs	
Mgmt Fee/Yr	
<b>Total Fixed Cost/Year</b>	<b>\$415,760</b>

Cost data in this report is intended to be used as a benchmark

### FOOTNOTES - Size of Operation: 1 - 2 Aircraft

Date: 4/25/2012

Currency: \$

7. Crew Salary Source	11 NBAA
Number of Crew	2
8. Ins Hull Value/Frac Share Cost	3,800,000
Hull Insurance Rate (%)	0.48
9. Modernization	10 Yr Avg
10. Refurbish Labor Hrs/Seat	40
11. Comp. Mx Program Source	Typical
12. Weather Service Source	Typical



## ANNUAL BUDGET

### Learjet 60

Utilization - Nt. Miles	175,000
- Hours	423

Variable Cost	1,013,021
Fixed Cost	415,760
<b>Total Cost (No Depreciation)</b>	<b>\$1,428,781</b>
- Per Hour	3,378.00
- Per Nt. Mile	8.16
- Per Seat Nt. Mile	1.17

Total Cost (No Depreciation)	1,428,781
Book Depreciation (13)	380,000
<b>Total Cost (Book Dep)</b>	<b>\$1,808,781</b>
- Per Hour	4,276.00
- Per Nt. Mile	10.34
- Per Seat Nt. Mile	1.48

Total Cost (No Depreciation)	1,428,781
Market Depreciation (14)	152,000
<b>Total Cost (Market Dep.)</b>	<b>\$1,580,781</b>
- Per Hour	3,737.00
- Per Nt. Mile	9.03
- Per Seat Nt. Mile	1.29

Cost data in this report is intended to be used as a benchmark

**Footnotes - Size of Operation:** 1 - 2 Aircraft

**Date:** 4/25/2012

**Currency:** \$

13. Book Depreciation Rate 10% per yr

14. Market Depreciation Rate 4.00



## GENERAL COMPARISON

### Learjet 60

Cabin-Height (Ft.)	5.71
- Width	5.92
- Length	17.67
Cabin volume (Cu. Ft.)	453.00
Cabin Door Height (Ft.)	5.30
- Width	2.00
Baggage -Int. (Cu.Ft.)	24.00
- External	24.00
Typical Crew/Pass Seating	2/7
Weight-Max Take-off (Lbs.)	23,500
- Maximum Landing	19,500
- Basic Operating	14,772
- Usable Fuel	7,910
Payload-Full Fuel (Lbs.)	1,068
- Maximum	2,228
Certified	Yes
IFR Certified	Yes
Price - New (Corporate)/1000	12,600
- Pre Owned Rng/1000	2,300/3,900
- Years Produced	1993 - 2003



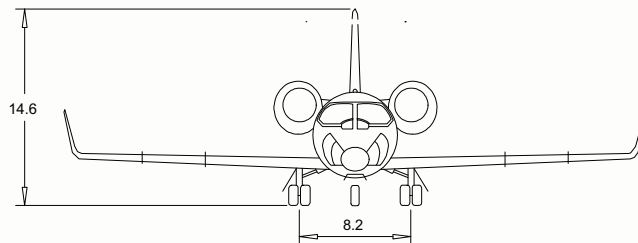
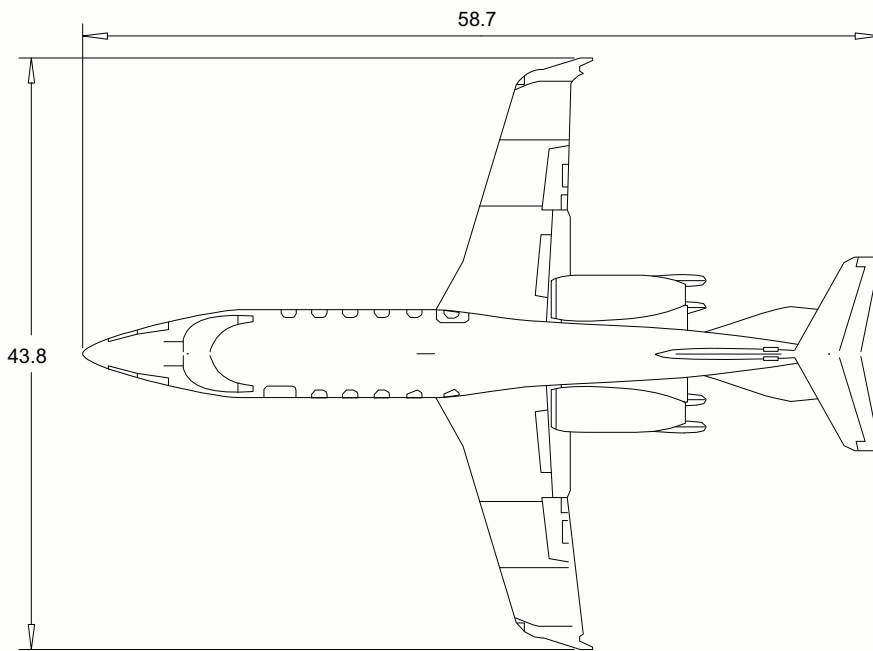
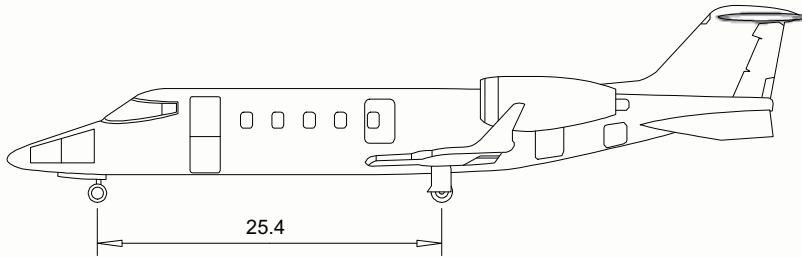
## PERFORMANCE COMPARISON

### Learjet 60

Range-NBAA IFR Res (N.Mi.)	
Seats Full	2,186
Ferry Range - (Pilot(s) only, no pax)	2,418
Range-30 Min. Res (N.Mi.)	
Seats Full	
Ferry Range - (Pilot(s) only, no pax)	
Balanced Field Length (Ft.)	5,450
Landing Field Length - FAR 91	3,125
Landing Field Length - FAR 121	5,208
Landing Field Length - FAR 135	3,906
Rate Of Climb (Ft/Min)	
- One Engine Out	714
Cruise Speed-Max (KTAS)	
- Normal	436
- Long Range	423
Stall Speed (IAS)	
Ceiling-Certified MTOW (Ft.)	51,000
- Service	42,400
- Service OEI	24,500
- Hover IGE (Helicopter Only)	
- Hover OGE (Helicopter Only)	

# EXTERIOR

Scale = 1:160



Learjet 60

Orleans, Massachusetts (508)255-5975

© 2006 Conklin & de Decker Associates, Inc.

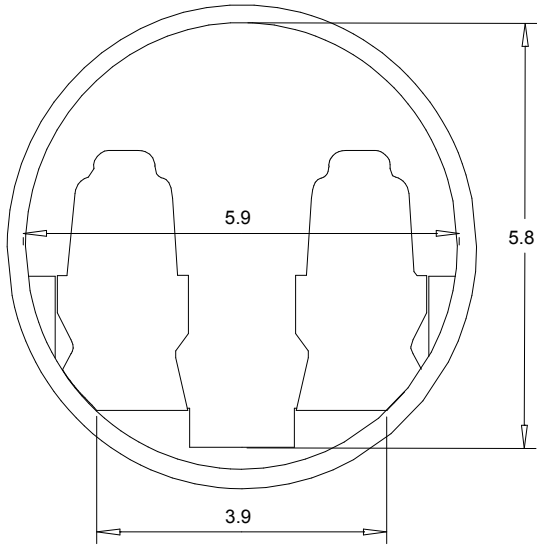
All dimensions are measured in Feet unless otherwise specified.

# INTERIOR

Orleans, Massachusetts (508)255-5975

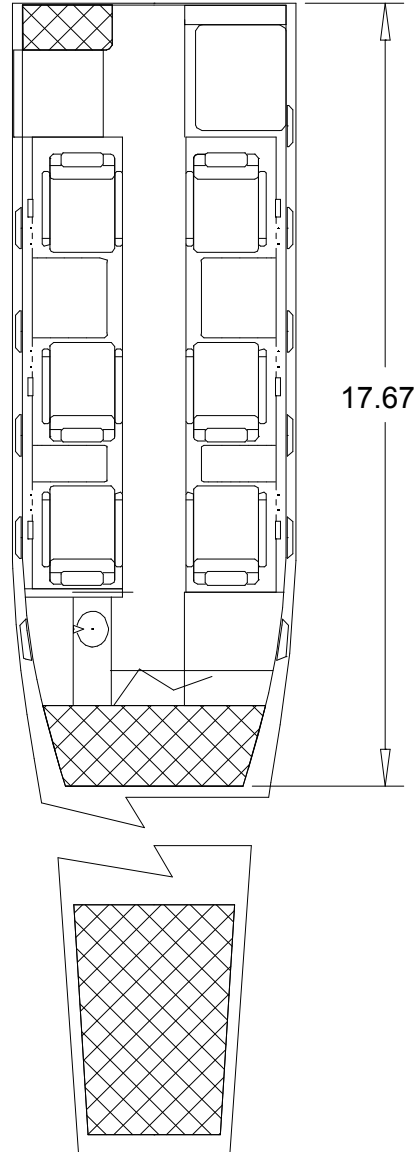
© 2006 Conklin & de Decker Associates, Inc.

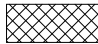
Scale = 1:30



Learjet 60

Scale = 1:50



 - Baggage

All dimensions are measured in Feet unless otherwise specified.



## **Learjet 60**

The Learjet 60 is a Learjet 55, with a 3½-foot longer fuselage, Pratt & Whitney Canada PW305 engines, Collins Pro Line 4 avionics, and numerous other improvements.

The Learjet 55 was Lear's entry into the medium-sized business jet field. In designing the 55, Learjet utilizes the earlier Longhorn 28/29 wing with winglets and married it to a larger fuselage. The step-down aisle in the cabin has 5 ft 9 inches of headroom

The Learjet 55B introduced a digital flight deck, modified wings, and an improved interior. The 55C comes equipped with Delta Fins that improve performance and handling.

The improved Learjet 60 first flew in June 1991 and deliveries started after certification in 1993.